

Motor-operated Mechanism Type MT150

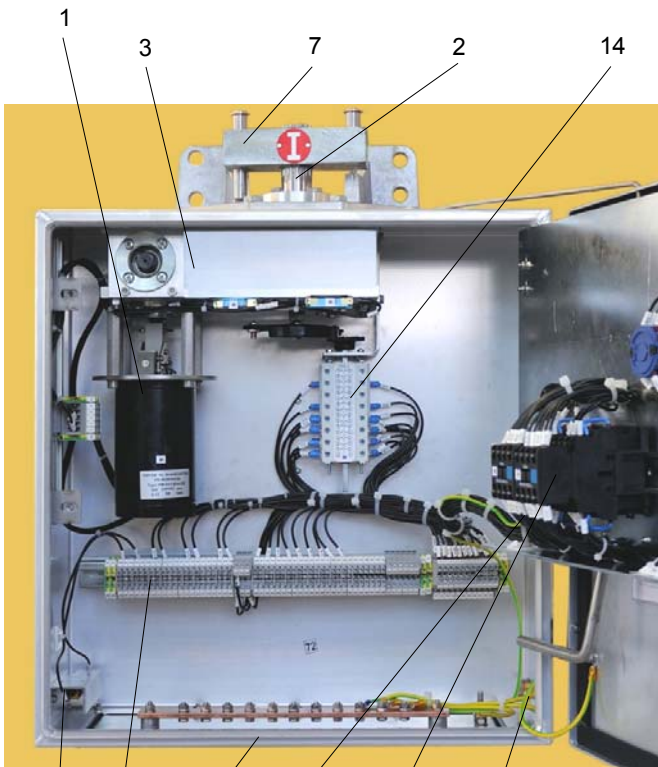
The motor-operated mechanisms type MT150 are designed for outdoor installation and used for the electrical remote operation of disconnectors and earthing switches.

The motor-operated drive mechanism can be supplied in two versions:

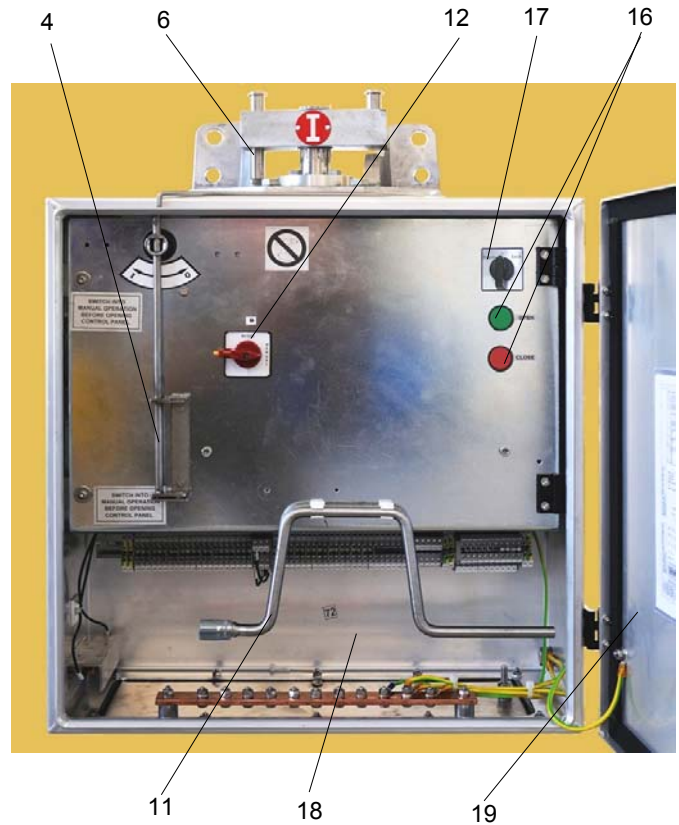
- type MT150 (close rotation clockwise) or
- type MT150-L (close rotation anti-clockwise).

The direction of the main shaft rotation is as seen on the top of the drive mechanism.

The mechanisms are designed according to the publication IEC 62271-102; IEC 62271-1 and most other national regulations.



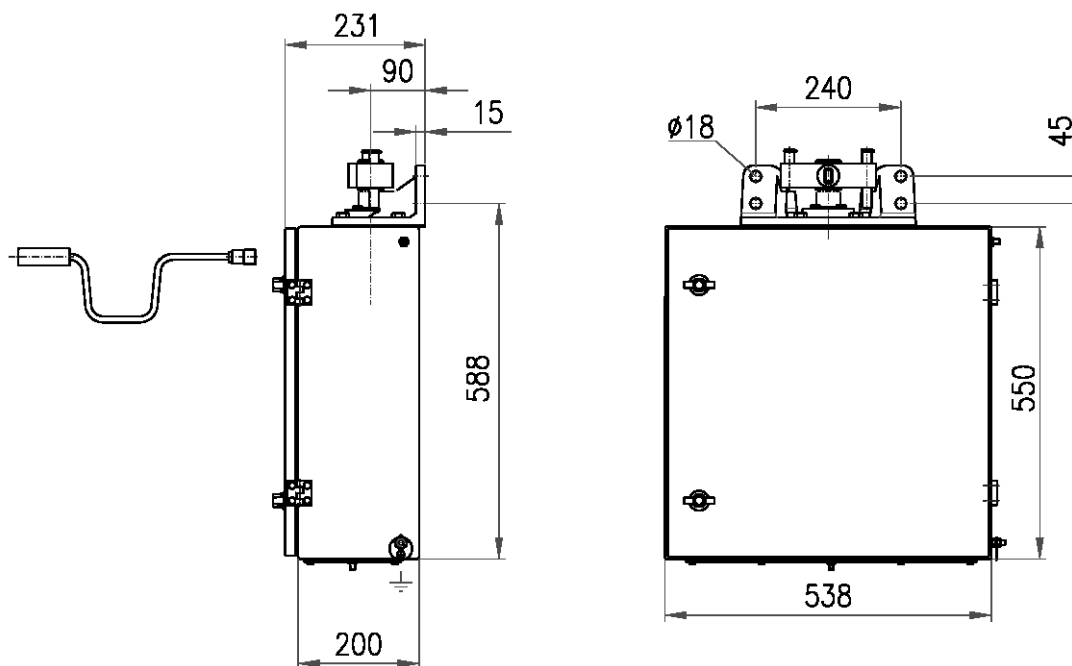
Inside view – control panel opened



Control panel – housing door opened

- 1 Motor
- 2 Main shaft
- 3 Gear box
- 4 Locking device
- 5 Terminal strip
- 6 Stop pin
- 7 Coupling
- 8 Main grounding point (not visible here)
- 9 Cable gland plate
- 10 Contactors
- 11 Handle for manual operation
- 12 Motor - Manual selector switch
- 13 Heater
- 14 Auxiliary switch
- 15 Overload protection
- 16 Open - Close pushbutton
- 17 Local - Remote selector switch
- 18 Housing
- 19 Door

Main dimensions:



Technical data of motor operated mechanism type MT 150

Rated Voltage	110 / 125V DC	220 / 250V DC	230 / 400V 50 / 60 Hz
In-rush current	6,3A	3,2A	1,3 / 0,7A cosφ: 0,74
Rated current	4,2A	2,4A	0,9 / 0,5A cosφ: 0,74
Max. current	7A / 30s	3,5A / 30s	2 / 1,1A / 30s
Angle of operation	190°	190°	190°
Operation time	6-10s	6-10s	6-10s
Rated torque	700 Nm	700 Nm	700 Nm
Maximum torque	1000 Nm	1000 Nm	1000 Nm
Heating Element	26W – 240V AC	26W – 240V AC	26W – 240V AC
Degree of protection	IP 54	IP 54	IP 54
Maximal cross-section of supply leads : - solid - stranded (with end sleeve)	4 mm ² 2,5 mm ²	4 mm ² 2,5 mm ²	4 mm ² 2,5 mm ²
Weight (max.)	50 kg	50 kg	50 kg

HAPAM Poland Sp. z o.o.
 22/24 Tymienieckiego St
 90-349 Lodz, POLAND
 Tel. +48 42 663 54 50
 Fax: +48 42 663 54 97
 E-mail: hapam@hapam.pl
 www.hapam.pl

Hapam B.V.
 Voltaweg 30
 3752 LP Bunschoten-Spakenburg
 The Netherlands
 Tel: 0031 33 298 30 04
 Fax: 0031 33 298 32 04
 E-mail: hapam@hapam.nl
 www.hapam.nl

HAPAM