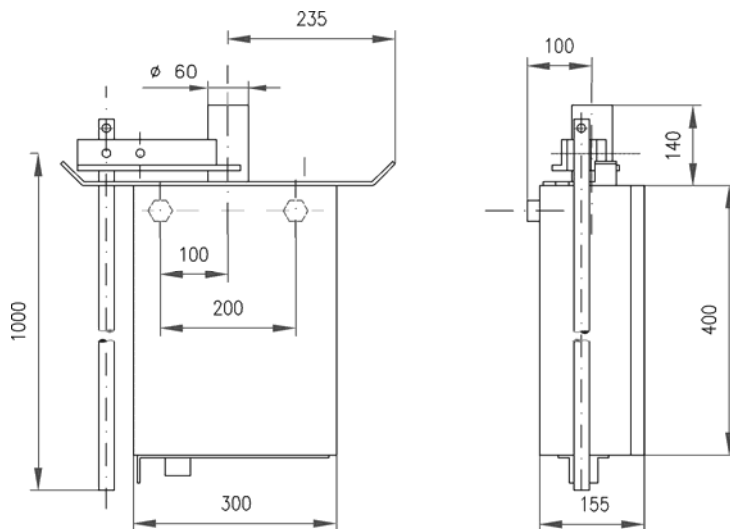


Hand-operated Mechanism type HA31-80

The hand-operated mechanisms type HA31-80 are designed for outdoor installation and used for the manual operation of disconnectors and earthing switches.

The mechanisms are designed according to the publication IEC 62271-102; IEC 62271-1 and most other national regulations.



Technical data of motor operated mechanism type HA31-80

Rated. torque	500 Nm
Length of operating lever	1000 mm
Switching angle of the hand lever	190°
Heating capacity	Approx. 25 W
Heating voltage	60, 110, 125 or 220 VUC
Degree of protection	IP 54
Cross section of internal wiring	1.5 mm ²
Cross section of supply leads	
solid	4 mm ²
stranded (with end sleeve)	2.5 mm ²
Dimensions (cubicle) L x W x H	300 x 155 x 400 mm
Weight	20 kg
Technical data of blocking magnet	
Operating voltage	110, 125, 220 DC
-with rectifier	110, 220 AC -50 / 60 Hz
Admissible deviation from the operating voltage	+10 / -15 %
Rated power consumption of magnet coil	approx. 7 W

HAPAM Poland Sp. z o.o.

22/24 W. Tymienieckiego St
90-349 Lodz, POLAND
Tel. +48 42 663 54 50
Fax. +48 42 663 54 97
hapam@hapam.pl
www.hapam.pl